

# Development of a new seamless prediction system for very short range convective-scale forecasting at DWD

**Ulrich Blahak, Roland Potthast, Kathrin Wapler, Axel Seifert, Alberto De Lozar, Elisabeth Bauernschubert, Christian Welzbacher, Robert Osinsky, Martin Rempel, Michael Hoff, Markus Junk, Lilo Bach**  
German Meteorological Service, Offenbach, Germany



## Motivation and project overview

**New internal project at DWD to develop a seamless ensemble prediction system for convective-scale forecasting from observation time up to +6 h / +12 h forecasts.**

**Focus:** severe summertime convective events (heavy precipitation, hail, wind gusts, etc.)

**Up to now,** the first 1-2 h covered by purely observation-based nowcasting, whereas convection-allowing ensemble NWP (COSMO-DE-EPS) only reaches/outperforms quality of nowcasting at later times. New NWP forecasts only every 3 h and after some technical time delay.

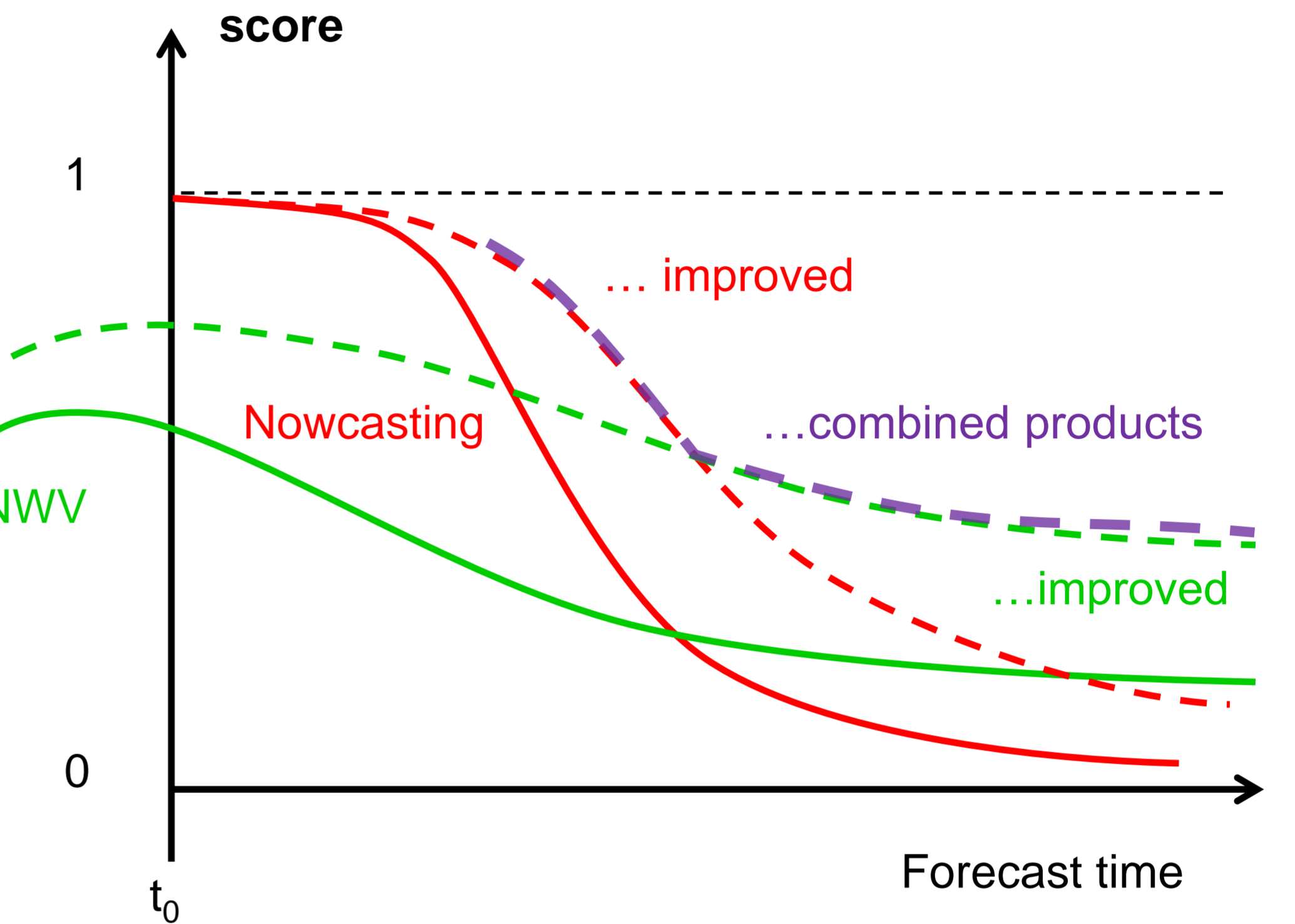
**Moreover,** nowcasting and ensemble NWP treated as two separate and independent methods, few common products available for the forecasters.

**Goal:** narrow down these gaps, on the one hand by enhancements to both nowcasting and NWP separately and on the other hand by mutual information exchange and combination. Use of high-resolution observational data (3D radar, satellite, GPS-derived moisture, lightning, etc.).

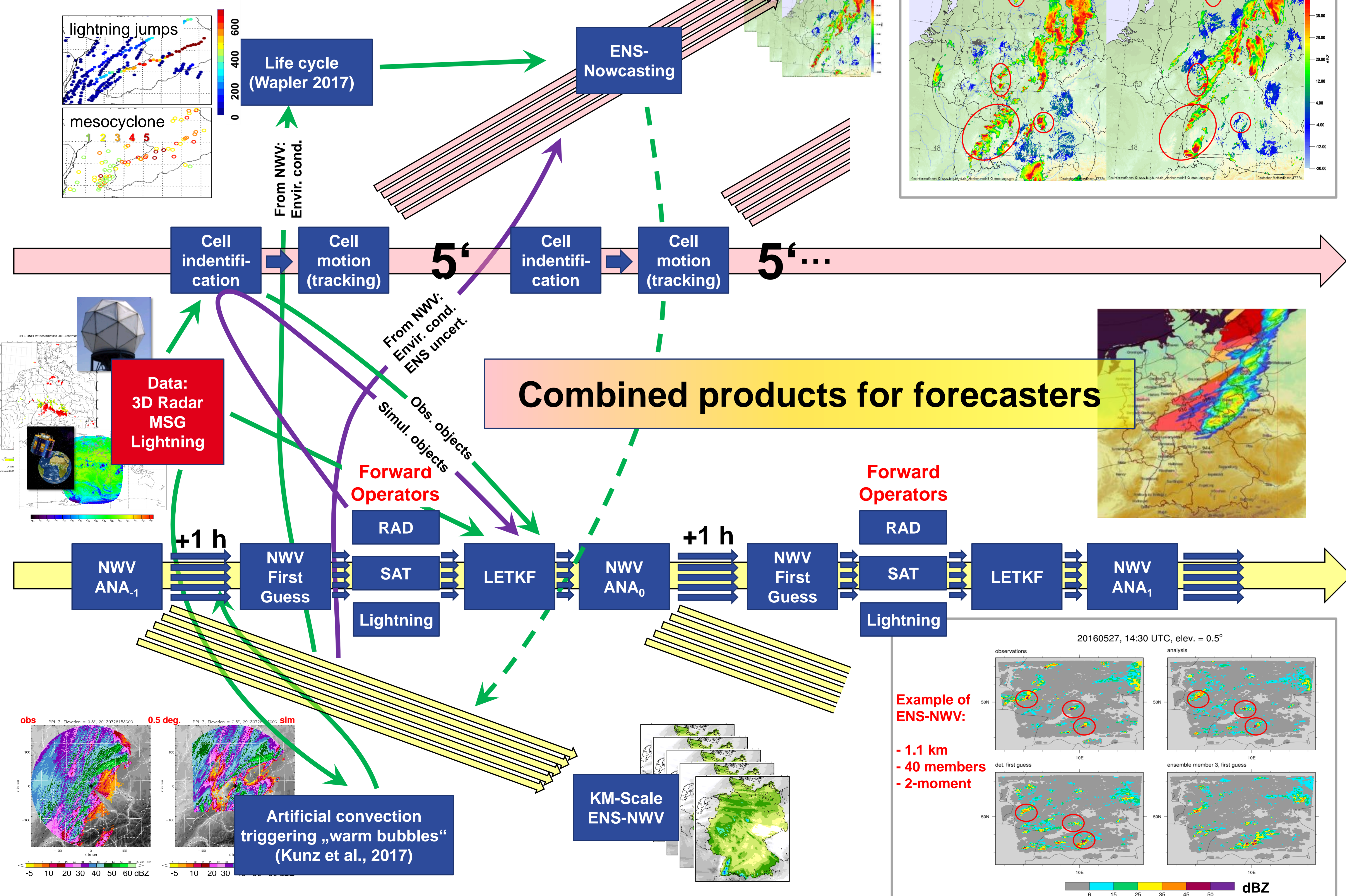
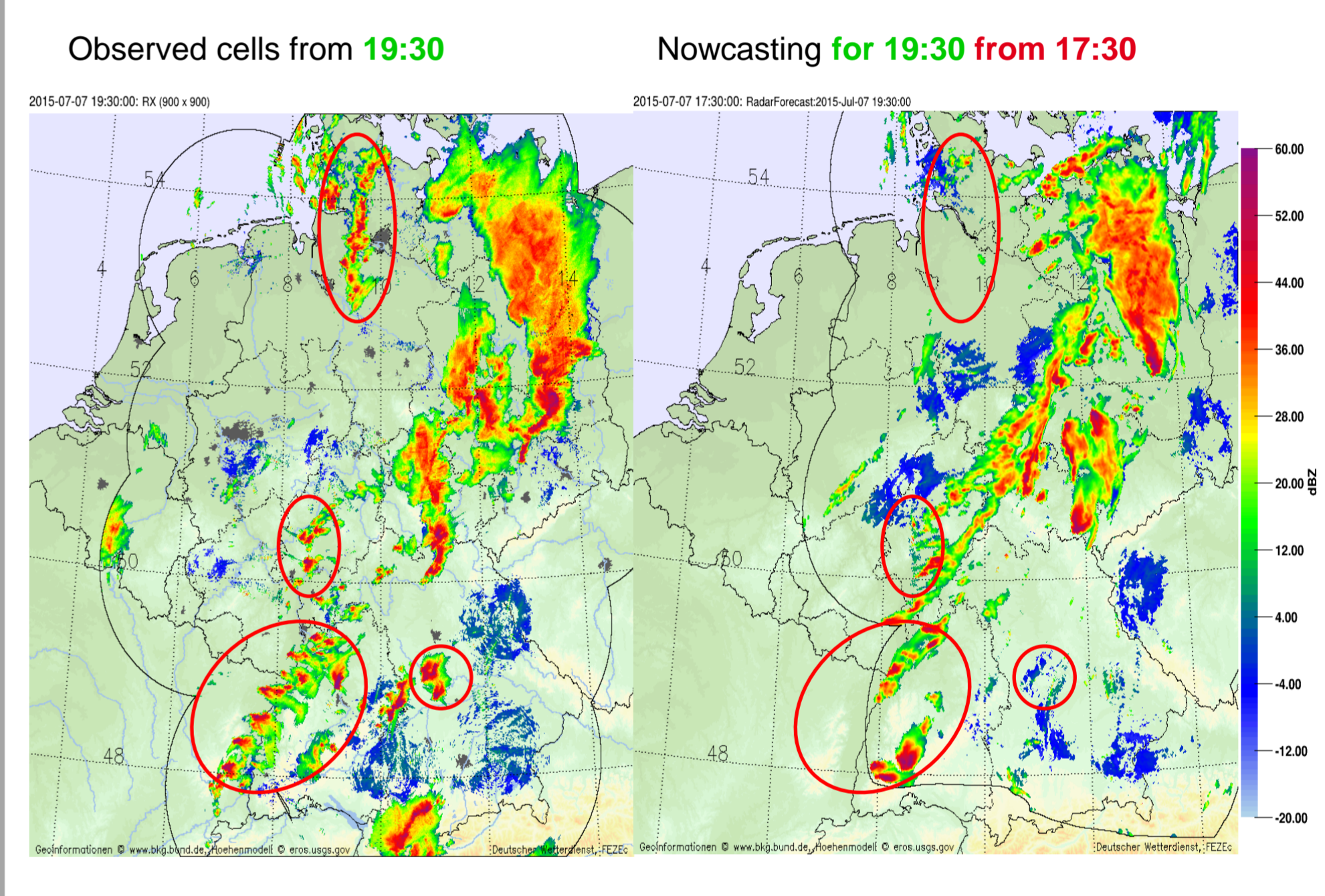
We consider in particular:

- **Nowcasting ensembles**, ensembles of "objects", also informed by uncertainties from NWP
- **Life cycle in nowcasting** (Wapler, 2017), informed by radar, lightning and satellite data, and by ensemble NWP
- **Rapid Update Cycle (RUC) ensemble NWP** (1-km-scale, LETKF, hourly update, ~40 members, advanced physics (2-moment microphysics including hail, 3D turbulence)
- **LETKF assimilation** (Schraff et al., 2016) in ensemble NWP in observation space of
  - 3D radar data (Bick et al., 2016; Zeng et al., 2016) - native observations & nowcast "objects"
  - MeteoSat SEVIRI IR / VIS (Scheck et al., 2016)
  - Lightning flash density using the Lightning Potential Index as a forward operator
  - Assimilate severe conv. cells into ENS-NWP at correct location as early as possible
- **New products** combining nowcasting and NWP for our forecasters

Some forecast quality



Typical example of problems with nowcasting for longer lead times:



## References

- Schraff, Ch., et al., 2016: Kilometre-scale ensemble data assimilation for the COSMO model (KENDA), Q. J. R. Meteorol. Soc., **142**, 1453-1472, DOI:10.1002/qj.2748
- Bick, Th., et al., 2016: Assimilation of 3D radar reflectivities with an ensemble Kalman filter on the convective scale, Q. J. R. Meteorol. Soc., **142**, 1490-1504, DOI:10.1002/qj.2751
- Zeng, Y., U. Blahak, D. Jerger, 2016: An efficient modular volume-scanning radar forward operator for NWP models: description and coupling to the COSMO model, Q. J. R. Meteorol. Soc., **142**, 3234-3256, DOI:10.1002/qj.2904
- Scheck, L., et al., 2016: A fast radiative transfer method for the simulation of visible satellite imagery, J. Quant. Spectr. Rad. Transf., **175**, 54-67, DOI:10.1016/j.jqsrt.2016.02.008
- Wapler, K., 2017: The life-cycle of hailstorms: Lightning, radar reflectivity and rotation characteristics, Atmos. Res., **193**, 60-72, DOI:10.1016/j.atmosres.2017.04.009
- Kunz, M., et al, 2017: The severe hailstorm in Germany on 28 July 2013: Characteristics, impacts and meteorological conditions, submitted

